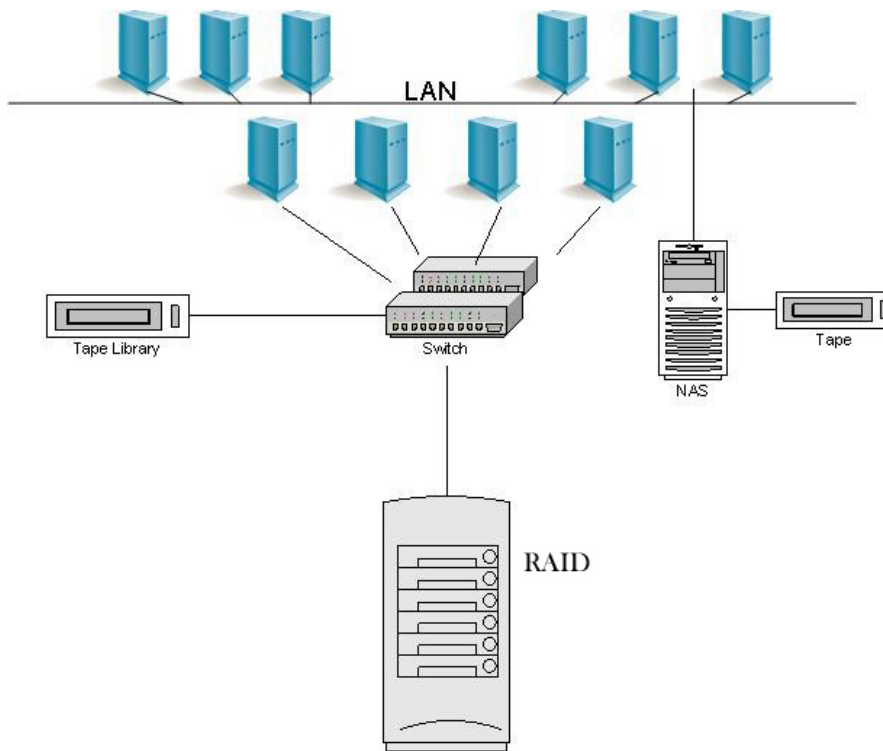


## Storage Area Network Solutions



### SAN Systems and their Components

	Entry Level SAN	Mid Level SAN	Enterprise Level SAN
<b>RAID System</b>	LSI E2400	LSI E4800	LSI E5600
<b>Switch</b>	Brocade SilkWorm 3200	Brocade SilkWorm 3800/3900	Brocade SilkWorm 12000
<b>Tape Library</b>	Quantum DX30	Quantum M1800	Quantum P7000

Data storage has moved to the forefront of business concerns, growing at exponential rates and demanding an increasing amount of resources. SANs (storage area networks) have proven to be high-ROI solutions to data storage issues, offering reduced capital expenditures, increased IT staff efficiency, higher system and application availability, a highly scalable and flexible storage architecture, and an enhanced ability to utilize the full value of a company's information assets.

A SAN improves on previous models of data storage with higher availability and simplified management where additional storage can be added as needed. The SAN implements the "Best of Breed" technologies to work as a multipurpose high-speed scalable solution that allows centralized storage and backup.

- SAN Benefits**
- Centralized Storage and Backup
  - Ease of Implementation
  - Full Redundancy
  - Open Architecture
  - Compatible in Heterogeneous Environments
  - LAN-free Backup